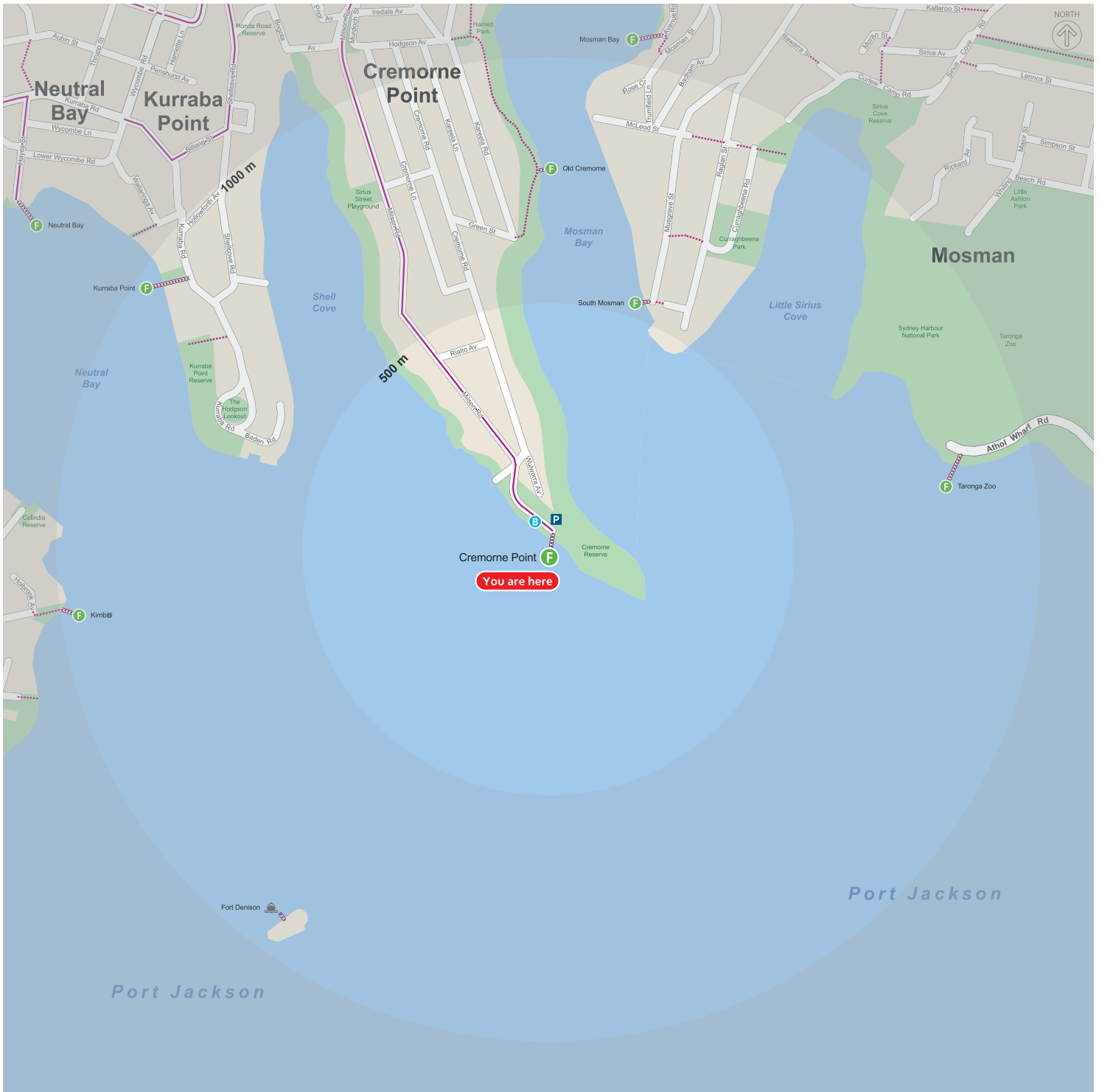


# Local area map



**B** Bus stop

**P** Car park

— On / off road cycling path

**F** Ferry wharf

... Walking path

- - Shared cycling and walking path

0 250 metres

Disclaimer: Information in this map is based on the latest details at the time of printing, and is subject to change without notice. January 2015.

StreetPro © Pitney Bowes Software Pty Ltd [2014] based on data provided under license from PSMA Australia Limited. Wherein's StreetNet Display and Facility POI data provided under licence from Sensis Pty Ltd [2014]. Cycle Path data from Roads & Maritime Services (RMS).

It's easy to travel with us



**Plan your trip**  
Visit [transportnsw.info](http://transportnsw.info)



**Opal is your ticket to travel**  
Get it before you travel from a shop nearby or visit [transportnsw.info](http://transportnsw.info)