



Upgrade of the Sydenham to Bankstown train line

Southwest Link bus services

Information for schools

Southwest transport changes

Changes to transport services will be introduced in stages from 21 September 2024 across Sydney.

From Saturday 21 to Sunday 29 September 2024

T3 Bankstown Line closes between Birrong and Campsie

- Buses replace trains between Lidcombe, Bankstown and Campsie. Bus routes include:
8T3: Lidcombe, then all stations to Bankstown and return
8AT3: Lidcombe, then express to Bankstown and return
18T3: Bankstown, then all stations to Campsie and return
- Trains run between Liverpool and the City via Regents Park, and between Campsie and the City, some to a changed timetable.
- If travelling between the City and:
Birrong, Yagoona or Bankstown catch a train to Lidcombe, then change for a bus.
Berala, Regents Park, Sefton, Chester Hill, Leightonfield, Villawood or Carramar catch a direct train.

From Monday 30 September 2024

T3 Bankstown Line will close between Sydenham and Bankstown to prepare for metro conversion work

- Southwest Link buses begin, providing a high frequency service between Sydenham and Bankstown stations for up to 12 months.
- New T6 Lidcombe & Bankstown Line train service starts.
- T3 Liverpool & Inner West Line train service introduced from Liverpool to the City via Lidcombe.
- St Peters and Erskineville stations are serviced by the T8 South Line.

Why is the T3 Bankstown Line between Sydenham and Bankstown being upgraded?

The T3 Bankstown Line between Sydenham and Bankstown is being upgraded to metro standards to enable rapid metro passenger services from 2025. This includes station upgrades to ensure full accessibility, with lifts and level access between platforms and trains.

Sydney Metro will operate as a turn-up-and-go service, with trains running every four minutes during peak hours – that's 15 trains per hour.

Why does the T3 Bankstown Line between Sydenham and Bankstown need to close?

The final conversion of the T3 Bankstown Line can only begin once Sydney Trains services stop running. The T3 Bankstown Line will be closed between Sydenham and Bankstown for up to 12 months while conversion work takes place.

This includes works to separate Sydney Trains and metro services at Bankstown Station, complete station upgrades, install platform screen doors, overhead wiring, final track alignment work, train testing and commissioning activities.

What is Southwest Link?

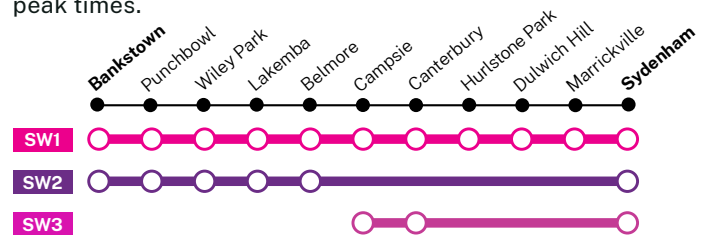
Southwest Link is a dedicated, high-frequency bus service between Sydenham and Bankstown stations ensuring passengers can continue to travel during the closure of the T3 Bankstown Line.

When does Southwest Link start and how long will it operate?

Southwest Link buses will start on 30 September 2024 and will operate for up to 12 months.

What are the Southwest Link routes?

There are three dedicated bus routes, with frequent services seven days a week and every three minutes in peak times.



Southwest Link forms part of an integrated transport plan.

How will I recognise the Southwest Link buses and find the correct route?

Southwest Link buses will be pink with route numbers (SW1, SW2, or SW3) and the destination clearly shown on the front of each bus, making it easier for passengers to know which bus to catch.

Bus marshals will also be located at all Southwest Link bus stops to help students and passengers during the first few weeks of the conversion period.

Marshals will be located at Sydenham, Campsie and Bankstown throughout the 12 month conversion.

How will I find my Southwest Link bus stop?

Bus stops will be located at the same locations as previous train replacement buses near the train stations along the route.

Directional signs around each station will clearly show students how to get to the Southwest Link bus stops.



Upgrade of the Sydenham to Bankstown train line

Southwest Link bus services

Information for schools

Where are the Southwest Link bus stops located?

Southwest Link bus stops are located near each station and will be clearly identified by signage.

Bus stop locations		
Station	Sydenham to Bankstown services	Bankstown to Sydenham services
Sydenham	Railway Parade	Railway Parade
Marrickville	Illawarra Road	Illawarra Road
Dulwich Hill	Ewart Street	Ewart Street
Hurlstone Park	Crinan Street	Crinan Street
Canterbury	Canterbury Road	Canterbury Road
Campsie	Beamish Street	Beamish Street
Belmore	Bridge Road	Bridge Road
Lakemba	The Boulevarde	The Boulevarde
Wiley Park	The Boulevarde	The Boulevarde
Punchbowl	The Boulevarde	The Boulevarde
Bankstown	Bankstown Station interchange	Bankstown Station interchange

Will there be bus marshals at Southwest Link bus stops?

Yes. Bus marshals will be located at all Southwest Link bus stops to help students and passengers during the first few weeks of the conversion period.

Marshals will be located at Sydenham, Campsie and Bankstown throughout the 12 month conversion.

Is there a dedicated Southwest Link bus for school students?

No. Southwest Link has enough capacity to accommodate the needs of students and other passengers.

Transport for NSW will monitor the demand on bus services and deploy standby buses during peak times in response to temporary surges in demand.

Will my journey time increase during the upgrade?

Yes. It's important to plan ahead and allow extra travel time to complete your journey between Sydenham and Bankstown during the upgrade. You'll be able to plan Southwest Link bus trips, as well as explore alternate transport options, ahead of services starting.

Is Southwest Link accessible?

All Southwest Link routes will be serviced by low-floor accessible buses.

As Southwest Link bus stops are located on roads near each station, passengers with accessibility needs should plan ahead to determine the best path of travel to their bus stop.

Do I need my student Opal card to use Southwest Link buses?

Travel on Southwest Link buses is free for all passengers throughout the duration of the final T3 Metro conversion.

The fare free travel period will start when Southwest Link services begin on Monday 30 September, and end when these services cease.

Opal readers on Southwest Link buses will be turned off and passengers using these bus services do not need to tap on or off.

Passengers should continue to use their Opal card on all other services across the public transport network.

Where can I get a school Opal card?

School travel passes can be used for free travel to and from school. Depending on where a student is travelling, they may be eligible to receive a free school travel pass, Student Opal card or both.

For more information on who is eligible for a Student Opal card or a school travel pass and how to apply, visit: transportnsw.info/school-travel-apply

Will I have to pay more to use Southwest Link buses?

Travel on Southwest Link buses is free for all passengers for the duration of the final T3 Bankstown Line conversion.

Between 21 - 29 September, train replacement buses between Campsie and Lidcombe will be fare free. During the 12 month conversion period, train replacement buses between Bankstown and Lidcombe during school holiday periods will also be fare free.

Fares will still apply for all travel on regular train, bus, ferry, and light rail services. This includes the new T6 train services, connecting Bankstown to Lidcombe station.

Opal benefits including the multi-modal discount and weekly travel cap will still apply.



Upgrade of the Sydenham to Bankstown train line

Southwest Link bus services

Information for schools

How can I plan my new Southwest Link trips?

Passengers will be able to plan their travel on the new Southwest Link services at least two weeks ahead of services starting by visiting:

transportnsw.info/trip

The Southwest Link web page will also be kept up to date with new information and travel options. Make sure to check back regularly and register for dedicated Southwest Link email updates here:

transportnsw.info/southwestlink

What happens during exam periods?

When exams occur during the 12 month conversion period Southwest Link buses will continue to operate.

Students should plan ahead at transportnsw.info/trip and allow extra travel time to ensure they arrive on time for their exams.

Schools are encouraged to reach out to the Southwest Link engagement team for advice on how we can support students during the closure:

Southwestlink@transport.nsw.gov.au

What are the changes for train stations west of Bankstown?

An adjusted timetable will be introduced to ensure passengers west of Bankstown continue to have access to train services.

T3 Liverpool & Inner West Line

From 30 September, train services currently operating between Liverpool and the City Circle via Bankstown will instead run via Regents Park and Lidcombe on the new T3 Liverpool & Inner West Line. This maintains a direct service to the Sydney CBD from Berala, Regents Park, Carramar, Villawood, Leightonfield, Chester Hill and Sefton.

New T6 Lidcombe & Bankstown Line

From 30 September a new train service will be introduced between Lidcombe and Bankstown. Passengers will be able to interchange between the new T6 Lidcombe & Bankstown Line and T3 Liverpool & Inner West Line at Regents Park to access services to the Sydney CBD, Liverpool or Bankstown.

At times during the final conversion period, buses will replace trains on the T6 Line between Lidcombe & Bankstown to allow for track upgrades and maintenance activities.

What are the changes for Erskineville and St Peters passengers?

Erskineville and St Peters will continue to receive direct train services to and from the Sydney CBD on the T8 Airport & South Line.

Are there any other public transport changes?

Transport will make further announcements about other changes to the public transport network to support the closure of T3 Bankstown Line.

What other travel options are available during the T3 upgrade?

An integrated transport plan has been developed and includes alternate transport options to help get people where they need to go during the T3 Bankstown Line upgrade.

Passengers can choose from:

- Southwest Link buses
- turn-up-and-go metro services at Sydenham
- local buses
- trains
- light rail
- cycling and walking routes.

How can I help ensure safe and comfortable travel on Southwest Link services and at bus stops?

Below are some tips to help ensure your journey, and the journey for those around you, is safe and comfortable, especially at peak travel periods when services may be busy.

Before travel and at the bus stop

- When using public transport, stay alert and don't be distracted by your mobile phone.
- Keep the footpath clear to allow others to walk past the bus stop safely.
- Allow passengers to get off before you get on.
- Watch your step when getting on and off the bus and use the handrail when boarding.
- Please do not board the bus if you're not feeling well at the stop. We will be able to get help to you much faster at the bus stop.

While on board the bus

- If seated, offer your seat to someone who needs it more than you. This includes people who are older, who have a disability or impaired mobility, who are pregnant or travelling with children.
- If no seats are available, move to the back of the bus and hold onto the handrails and straps.
- If standing, do not stand in the safety area around the doors.
- Ensure luggage, bags and personal items are stowed correctly and are not blocking the aisle.



Upgrade of the Sydenham to Bankstown train line Southwest Link bus services Information for schools

Getting off the bus

- As the bus approaches your stop, remain seated but prepare to get off.
- When getting off the bus, use the doors that are most convenient. If you require assistance, use the front doors.
- Watch your step and mind the gutter when getting off the bus. Use the handrail as support.

How can I stay informed?

Staff, students, parents and carers can stay informed and receive timely updates on transport options by registering for updates at:

transportnsw.info/southwest-link

How do I provide feedback about Southwest Link or other bus services?

To provide feedback on any transport services, please visit:

transportnsw.info/contact-us/feedback/bus-feedback.

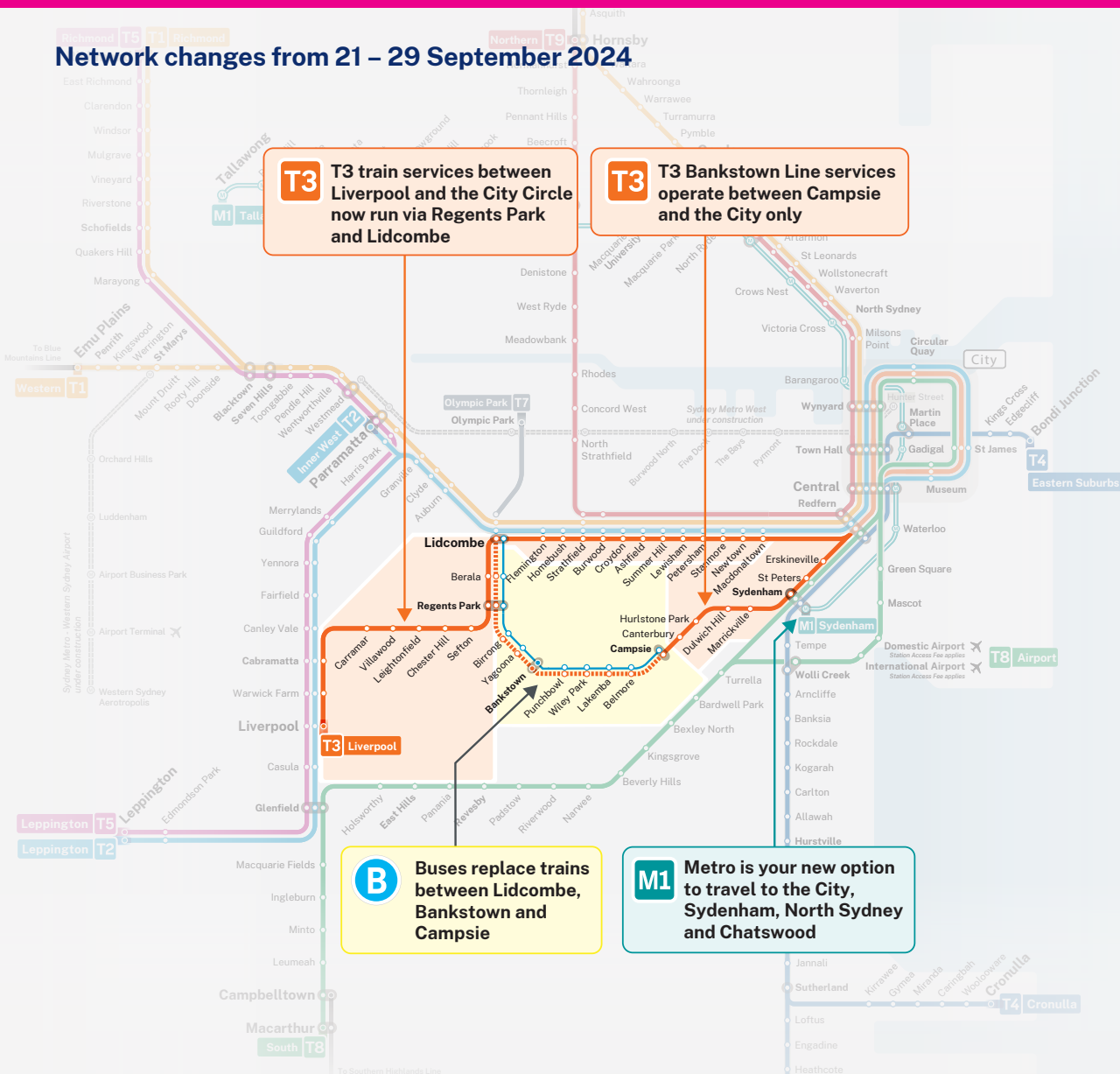


Upgrade of the Sydenham to Bankstown train line

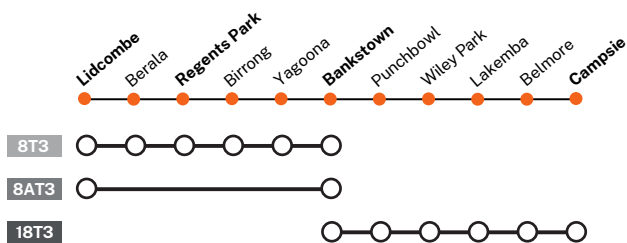
Southwest Link bus services

Information for schools

Network changes from 21 – 29 September 2024



Train replacement bus services between 21 – 29 September 2024



Lidcombe – Change for trains to City, Parramatta or Liverpool **T1 T2 T3**

Regents Park – Change for trains to Liverpool **T3**

Campsie – Change for trains to the City **T3**

Travel on these train replacement buses is free.



Making way for Sydney Metro

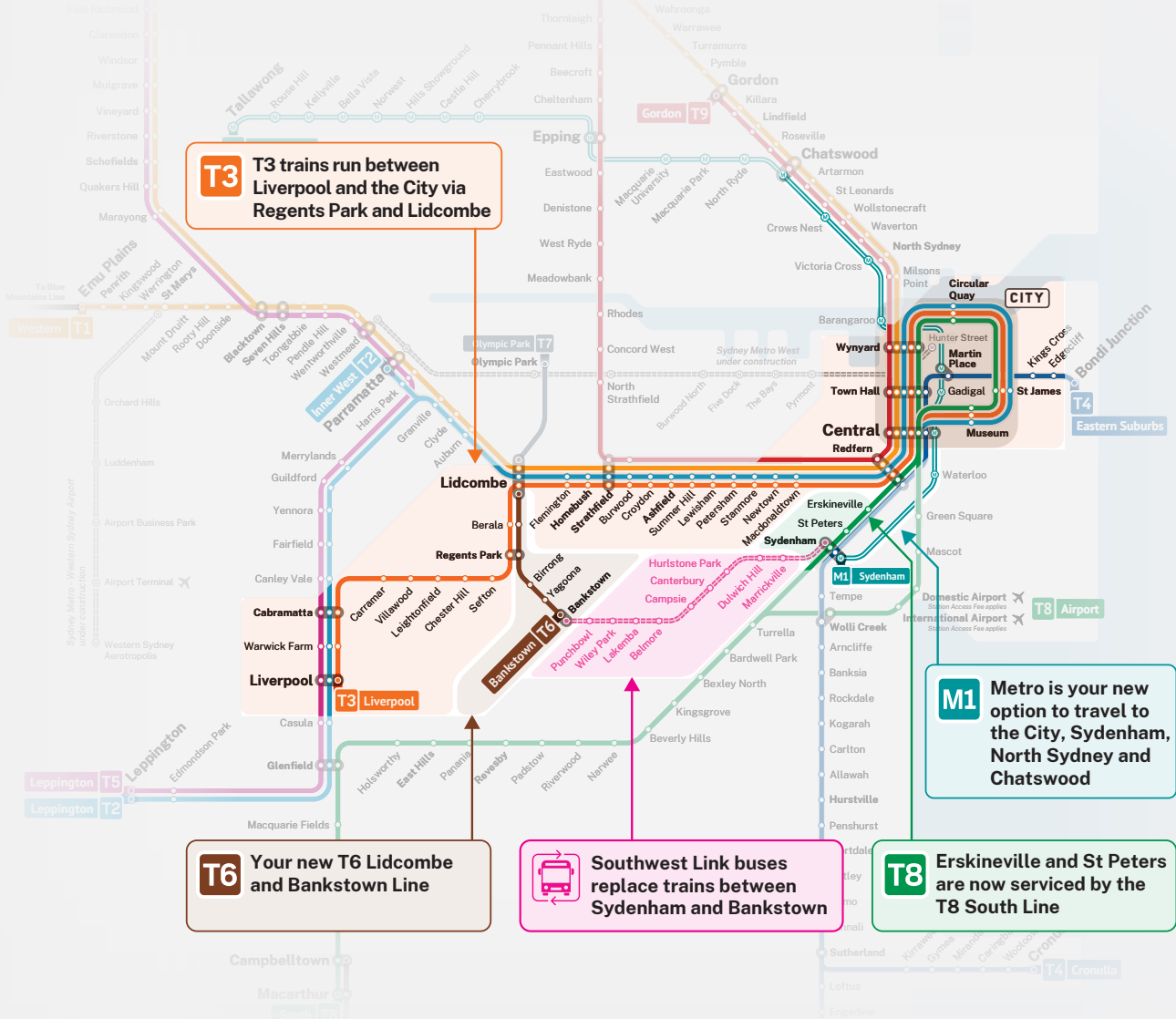


Upgrade of the Sydenham to Bankstown train line

Southwest Link bus services

Information for schools

Network changes from 30 September 2024



Southwest Link bus services from 30 September 2024



Making way for Sydney Metro