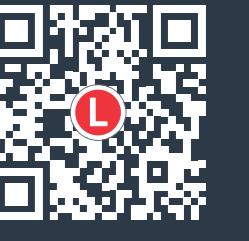


Stop guide

Next services information

Visit transportnsw.info or scan this QR code for next services information



Transport connections

L L4 Westmead & Carlingford Line services operate Monday to Sunday 05:00 to 01:00. For next services information refer to information displays on platforms.

B Bus services depart from: Bus stop 211711 towards Macquarie Park. Bus stop 211712 towards Parramatta.

For more details and for services from other bus stops nearby, visit transportnsw.info

Kiss and ride bays are located on both sides of the stop.

Bike parking spaces are provided at this stop.

Customer assistance

Emergency Help Points link directly to staff who can assist you. Penalties may apply for misuse of Emergency Help Points.

This stop is equipped with hearing loops below the shelter canopy. Use a T-Switch hearing aid to more easily hear customer announcements.

To report lost items visit transportnsw.info. For hearing or speech impairments, please contact the National Relay Service on 133 677 or visit relayservice.gov.au

Facilities

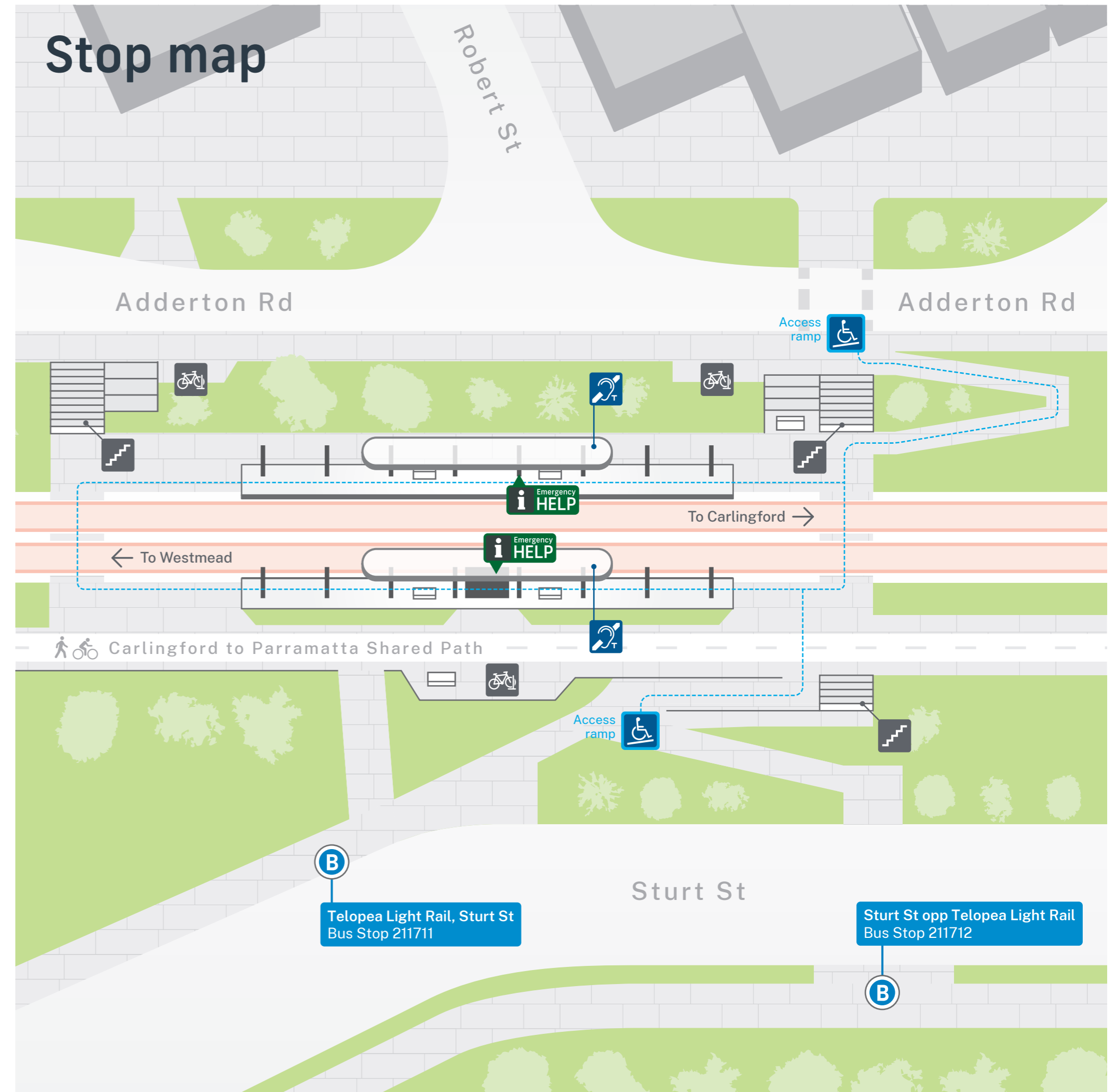
Accessible toilets are available on Evans Road. Visit toiletmap.gov.au for opening hours

Tickets

For light rail services, you can use an Opal card, a contactless credit or debit card or a linked device to pay for travel by tapping on and tapping off at the Opal readers on each platform.

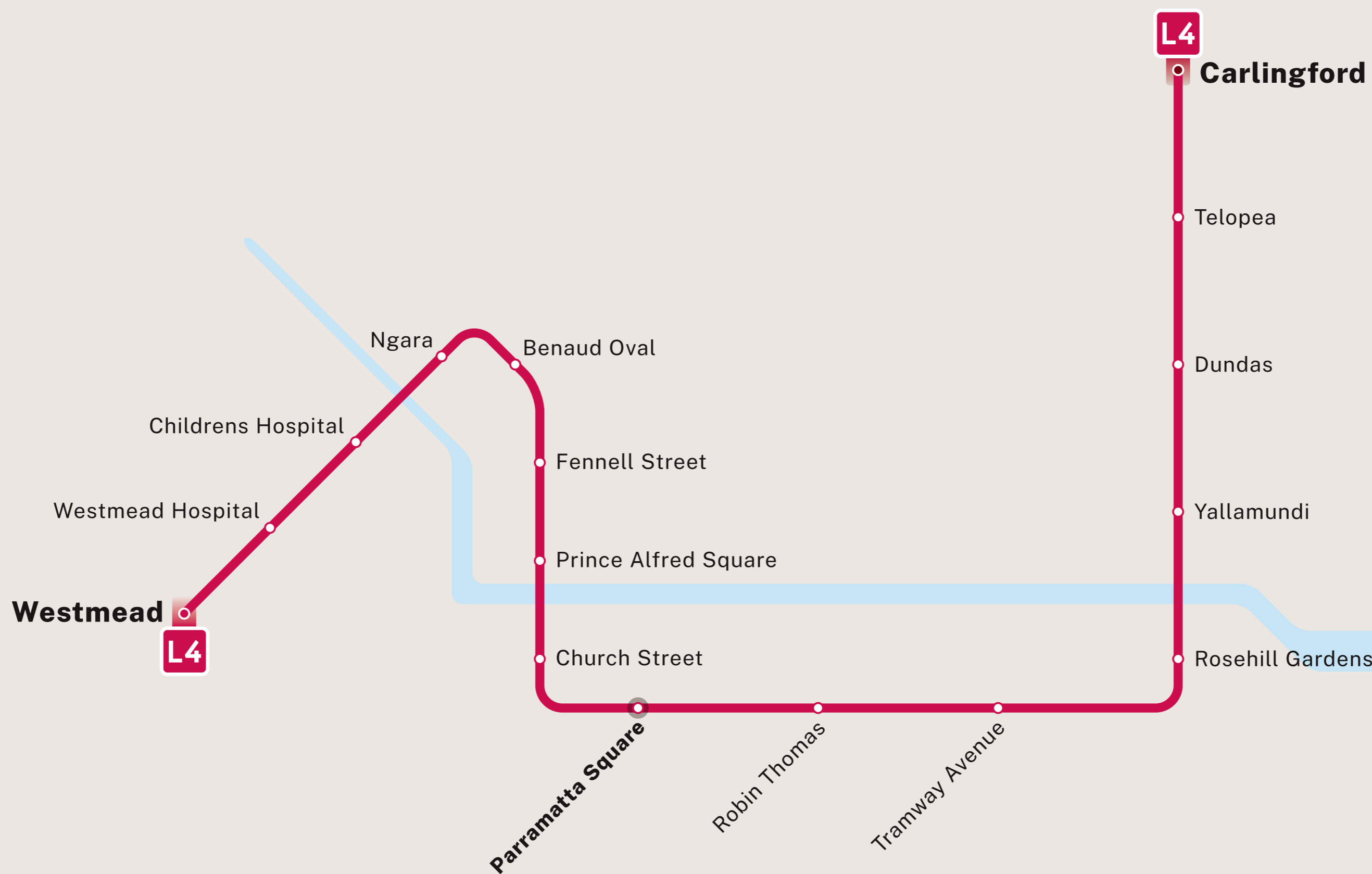
Plan ahead and top up or purchase your Opal card online or from an Opal retailer. Visit transportnsw.info for more information.

Tap on and tap off, every time. Remember to both tap on and tap off to avoid a fine of up to \$550.00.



Parramatta light rail network

L Light Rail



Parramatta light rail lines

L4 Westmead & Carlingford Line
Westmead
Carlingford

Copyright © 2024 Transport for NSW

End of line
 Interchange
 Stop
 NORTH
 All light rail stops are accessible
Check trip planners for light rail services and connections